



Initial state and/or final state effects: the Ridge Effect in pp – pPb - $PbPb$ at the LHC

Helena Białkowska
NCBJ



Tatra mountains (hard ridge)





Ocean surfers (soft ridge) (from Broniowski&Bożek)



Surfers are correlated – even while separated along the shore





- What is a Ridge effect?
 - History: RHIC data
 - Surprise: Ridge at LHC in pp
 - First interpretations
 - Sequel 1: Ridge at LHC in PbPb
 - `Correlation` = flow (with higher terms)?
 - Sequel 2: Ridge at LHC in pPb
- From pp to pPb to PbPb: same object?

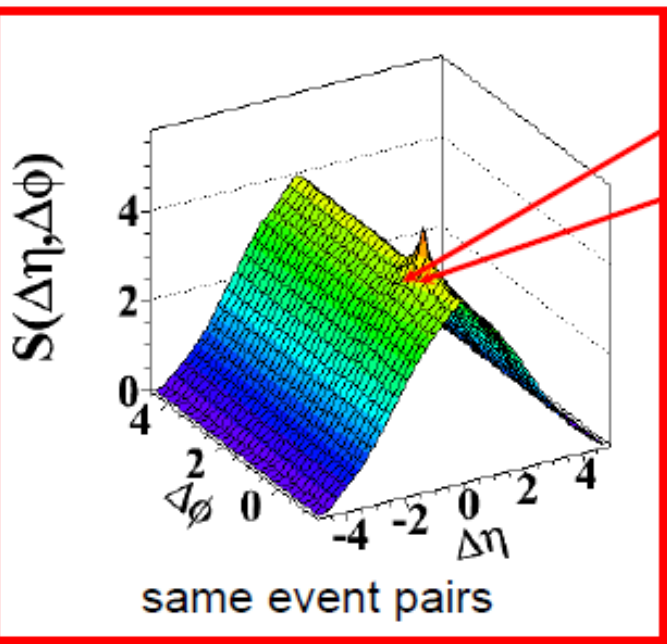


Definition:



Signal distribution:

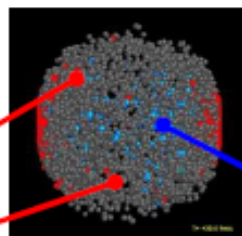
$$S(\Delta\eta, \Delta\phi) = \frac{1}{N_{\text{trig}}} \frac{d^2 N^{\text{same}}}{d\Delta\eta d\Delta\phi}$$



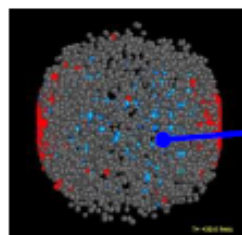
Particle 1: trigger

Particle 2: associated

Event 1

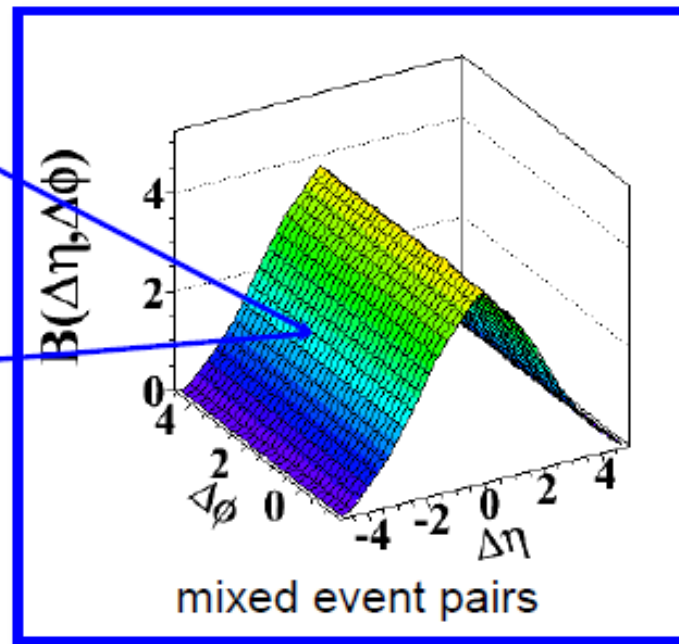


Event 2



Background distribution:

$$B(\Delta\eta, \Delta\phi) = \frac{1}{N_{\text{trig}}} \frac{d^2 N^{\text{mix}}}{d\Delta\eta d\Delta\phi}$$



$$\Delta\eta = \eta^{\text{assoc}} - \eta^{\text{trig}}$$

$$\Delta\phi = \phi^{\text{assoc}} - \phi^{\text{trig}}$$

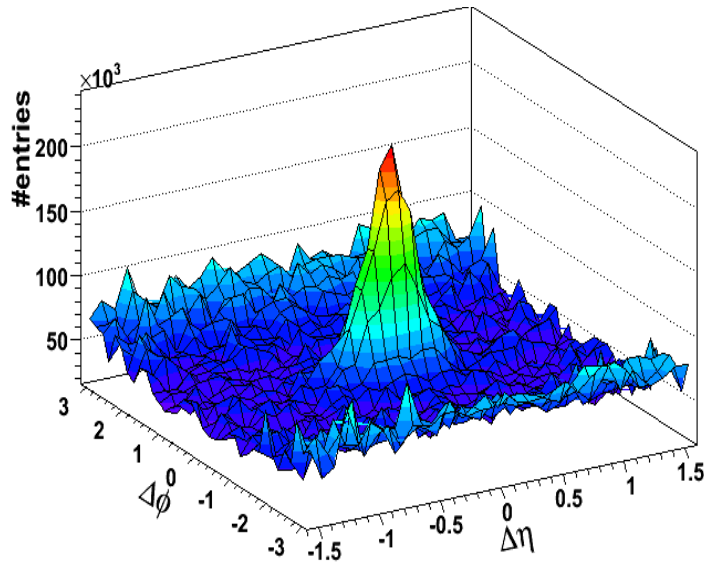
Associated hadron yield per trigger:

$$\frac{1}{N_{\text{trig}}} \frac{d^2 N^{\text{pair}}}{d\Delta\eta d\Delta\phi} = B(0,0) \times \frac{S(\Delta\eta, \Delta\phi)}{B(\Delta\eta, \Delta\phi)}$$

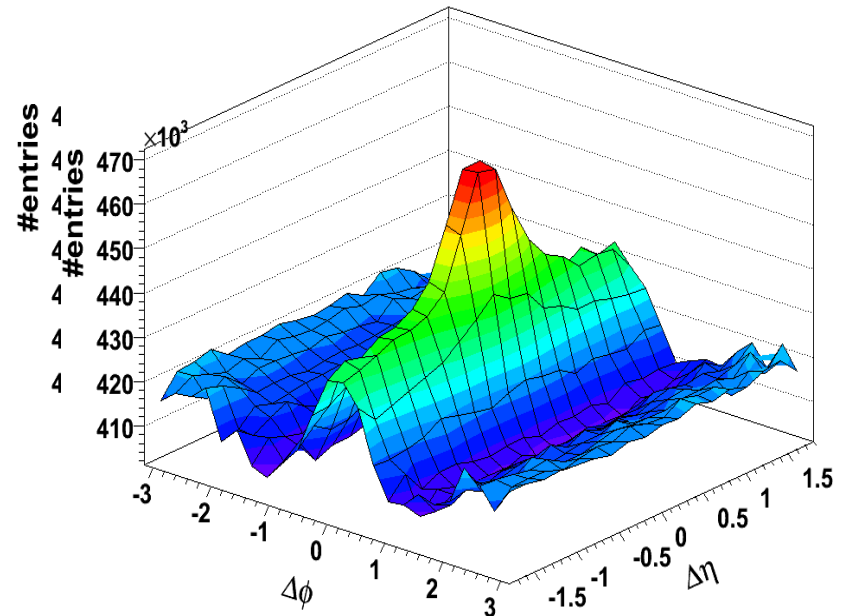


History: STAR at RHIC:

d Au



Au Au 0 – 12%



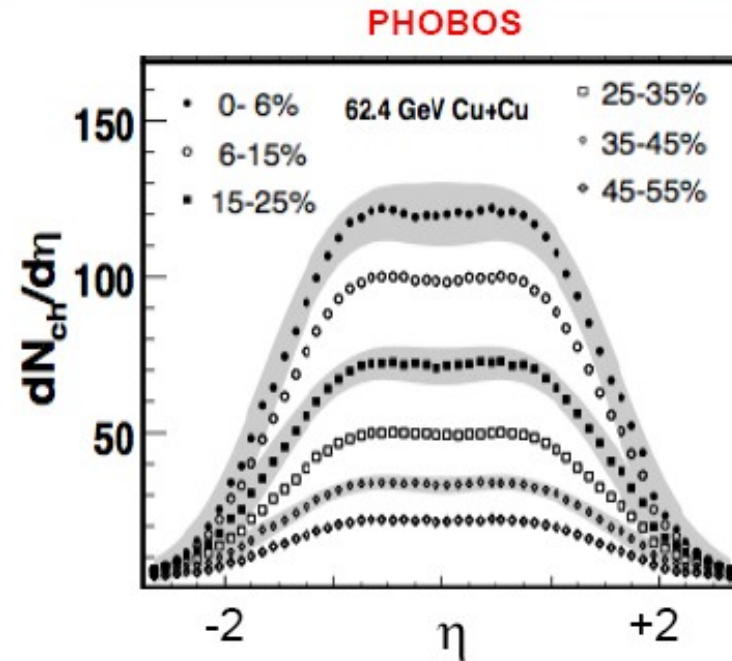
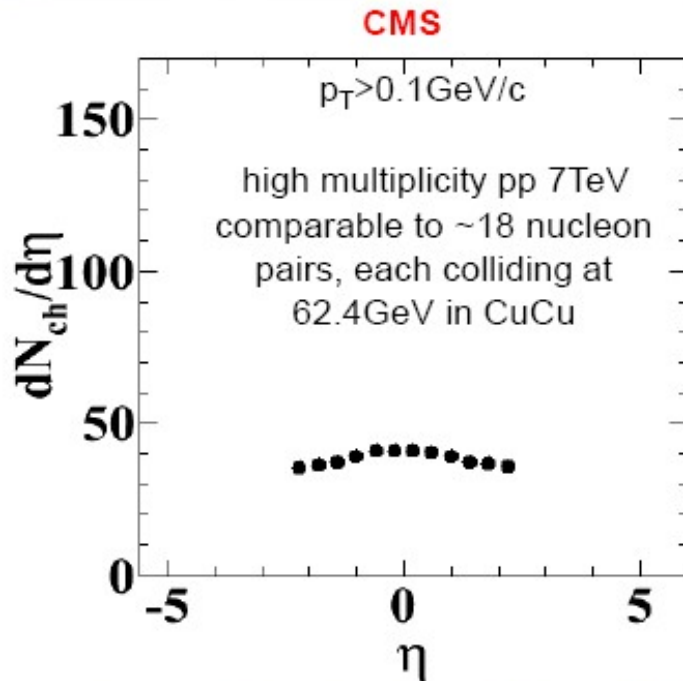
2-particle correlation shows prominent **ridge** along $\Delta \eta$ in near side ($|\Delta \phi| < 0.7$)



At the LHC



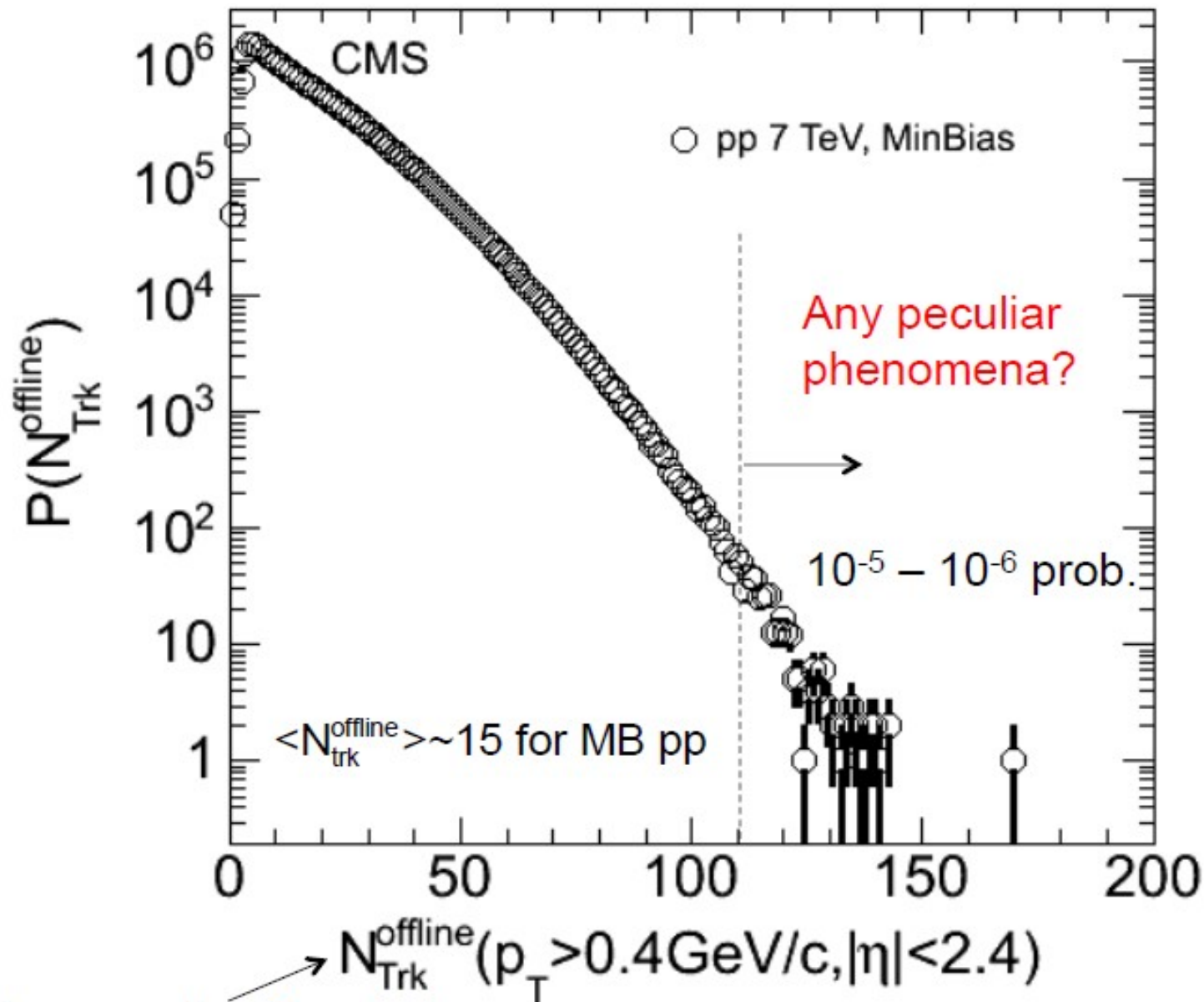
Why high multiplicity pp interesting?



The particle densities in the high multiplicity events of proton-proton collisions at 7TeV begin to approach those in high-energy collisions of nuclei such as Copper.

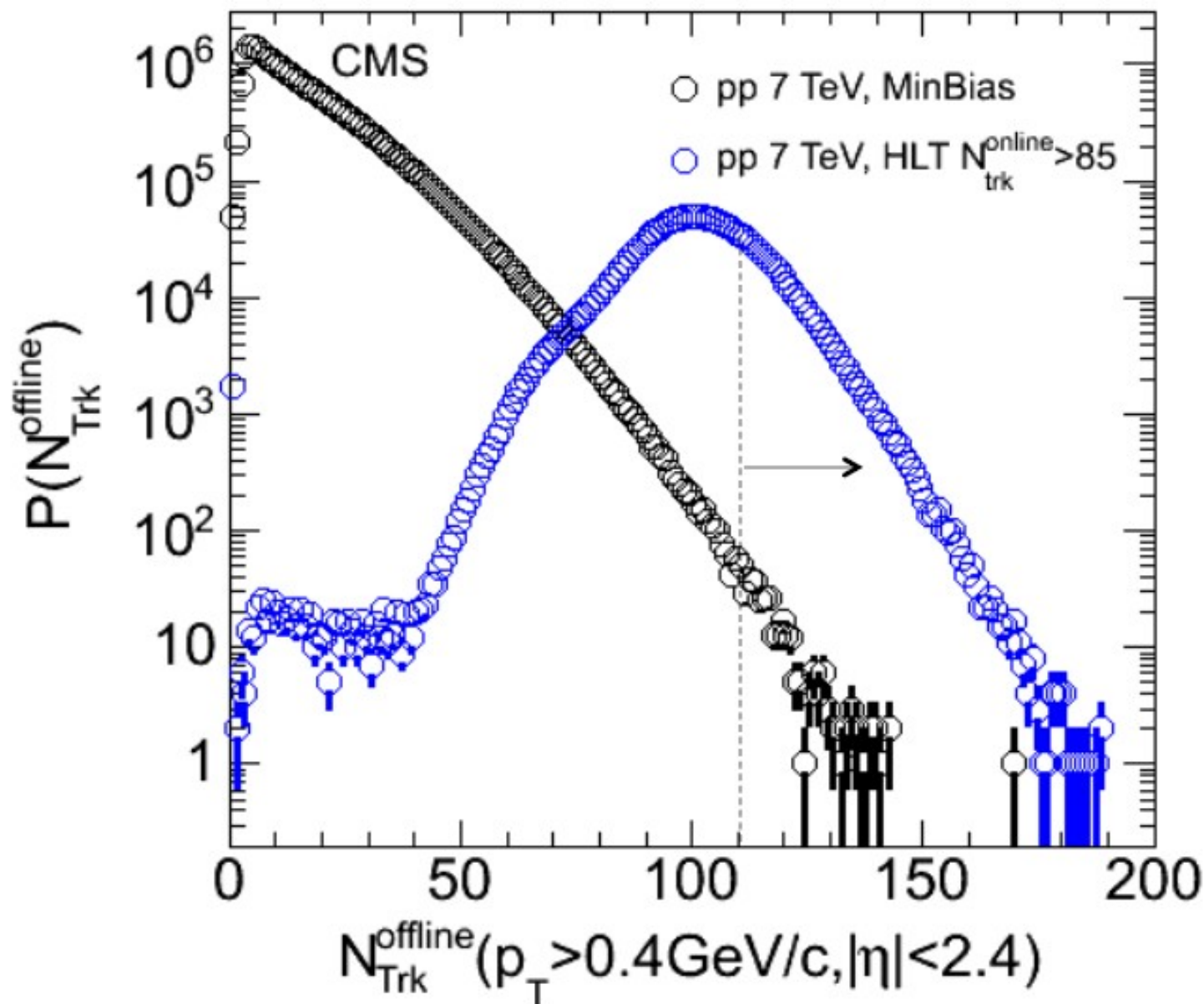
It was considered natural to study the two particle angular correlations in LHC and compare the results with the ones obtained in relativistic heavy ion colliders like RHIC.

Very high-multiplicity pp events are rare in nature



Raw counts of tracks!

Dedicated online selection of high multiplicity events



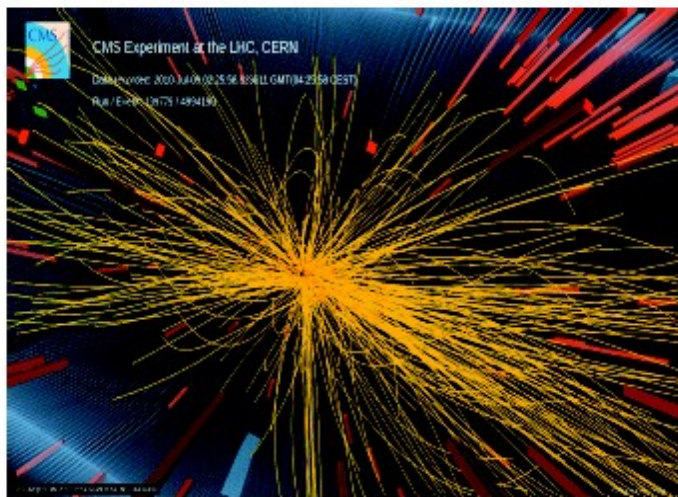


Observation of Long-Range, Near-Side Angular Correlations in Proton-Proton Collisions at the LHC

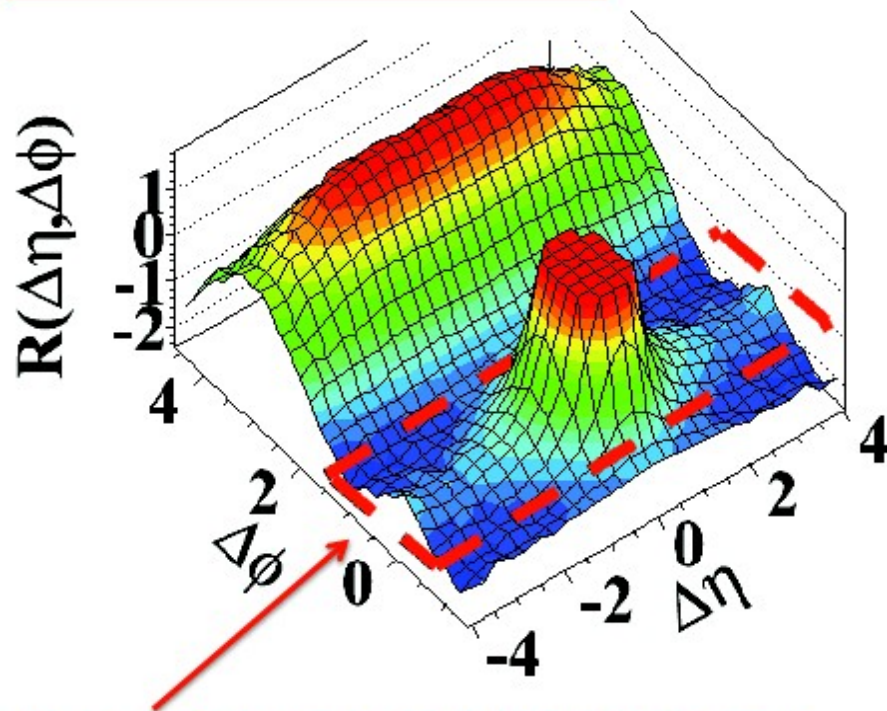
CMS collaboration, JHEP 09 (2010) 097



pp $N > 110$, $1 < p_T < 3$ GeV/c



Event with more than 200 charged particles



Unexpected ridge-like correlations in high multiplicity pp!

Different structures:

"Away-side" ($\Delta\phi \sim \pi$) jet correlations:
Correlation of particles between back-to-back jets

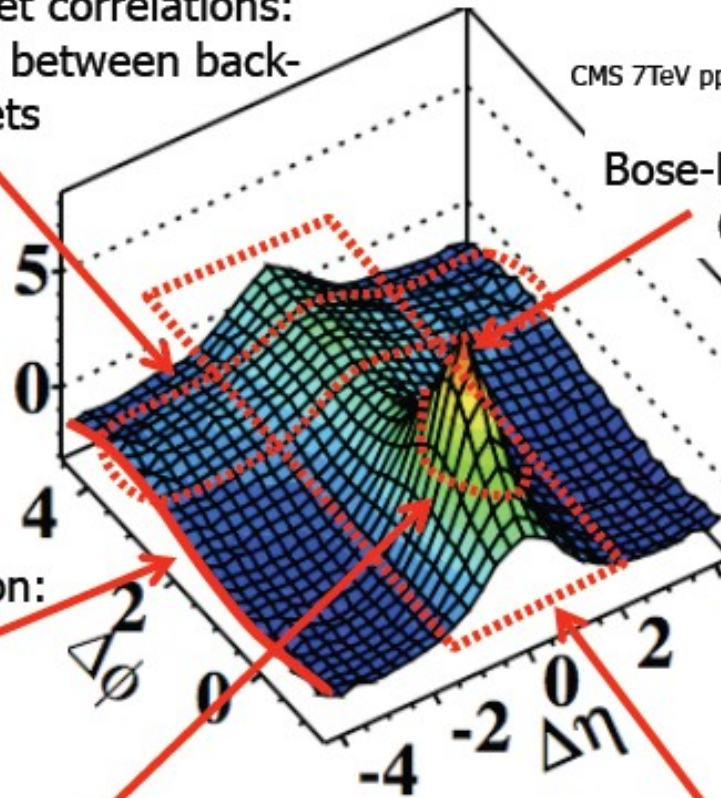
CMS 7TeV pp min bias

Bose-Einstein correlations:
($\Delta\phi, \Delta\eta$) \sim (0,0)

Momentum conservation:
 $\sim -\cos(\Delta\phi)$

"Near-side" ($\Delta\phi \sim 0$) jet peak:
Correlation of particles within a single jet

Short-range correlations ($\Delta\eta < 2$):
Resonances, string fragmentation, "clusters"





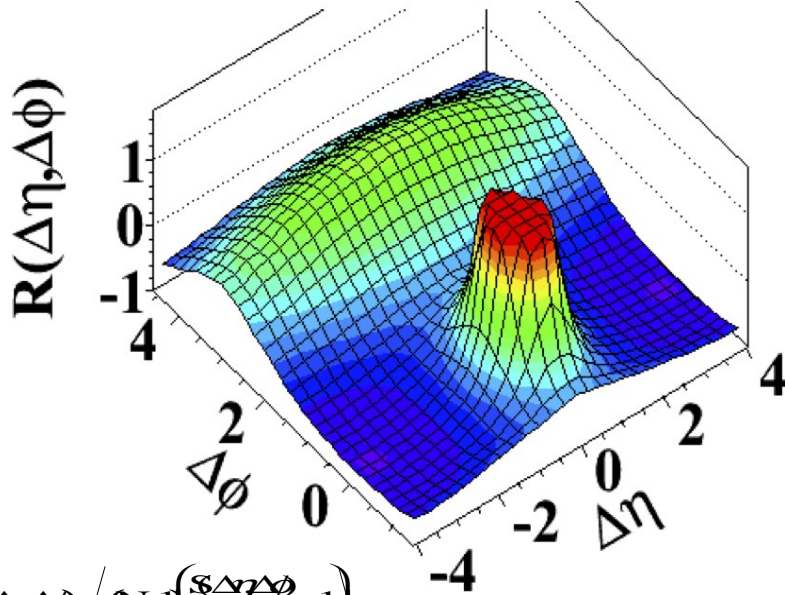
Ridge in high multiplicity pp



Intermediate p_T : 1-3 GeV/c

350K events

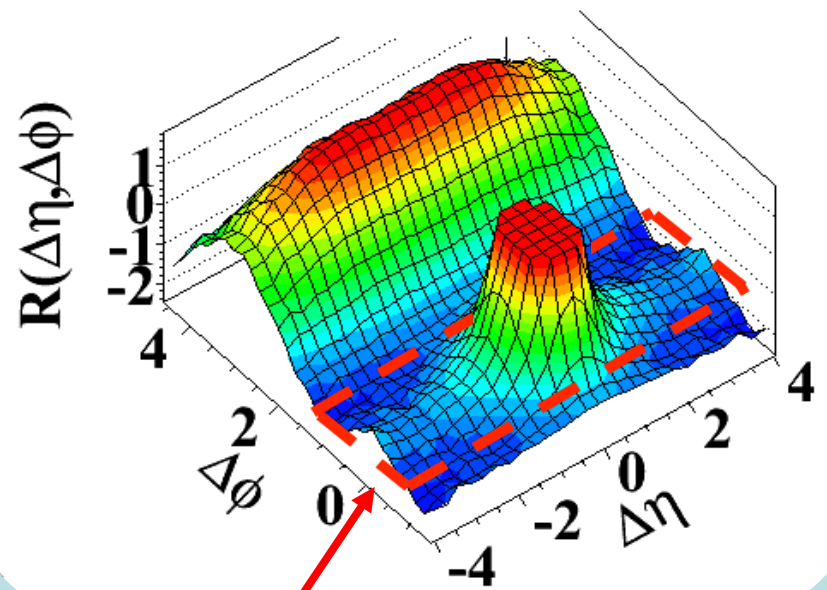
Minimum Bias pp ($\langle N \rangle \sim 15$)



$$R(\Delta\eta, \Delta\phi) = \frac{1}{N} \left(\frac{S(\Delta\eta, \Delta\phi)}{B(\Delta\eta, \Delta\phi)} - 1 \right)$$

peak truncated

High multiplicity pp ($N \geq 110$)



JHEP 09 (2010) 091

Striking **“ridge-like”** structure extending over $\Delta \eta$ at $\Delta \phi \sim 0$

(not observed before in hadron collisions or MC models)



Prediction, postdictions, comments for pp at LHC:



- CERN presentation: Sept 21, 2010
- E.V.Shuryak on arXiv: Sept 23

‘perhaps this observation is the first hint for an explosive behaviour in pp, which was anticipated for decades...’

A.Dumitru et al., on arXiv Sept 27:

‘We show that key features [of LHC result] can be understood in the Color Glass Condensate framework of QCD’.



If long range rapidity correlations exist, the correlation must be formed at proper time earlier than:

$$\tau_{\text{init.}} = \tau_{\text{f.o.}} \exp\left(-\frac{1}{2} \Delta y\right)$$



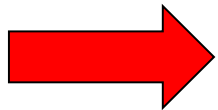
Color Glass Condensate:

At high energy most of the particles are produced from incoming partons that carry a very small fraction x of the longitudinal momentum of the projectile.

At RHIC typical value of $x \sim 10^{-2}$

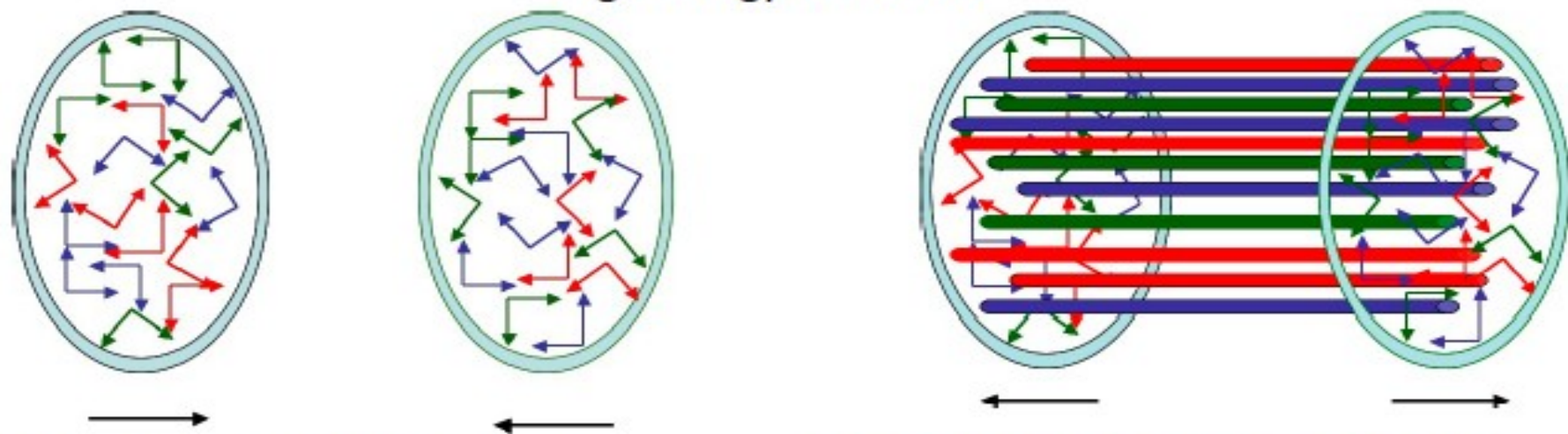
At LHC $\sim 10^{-4}$

At such small x – the gluon density in a proton (or a nucleus) becomes large



gluon saturation

High Energy Collisions:



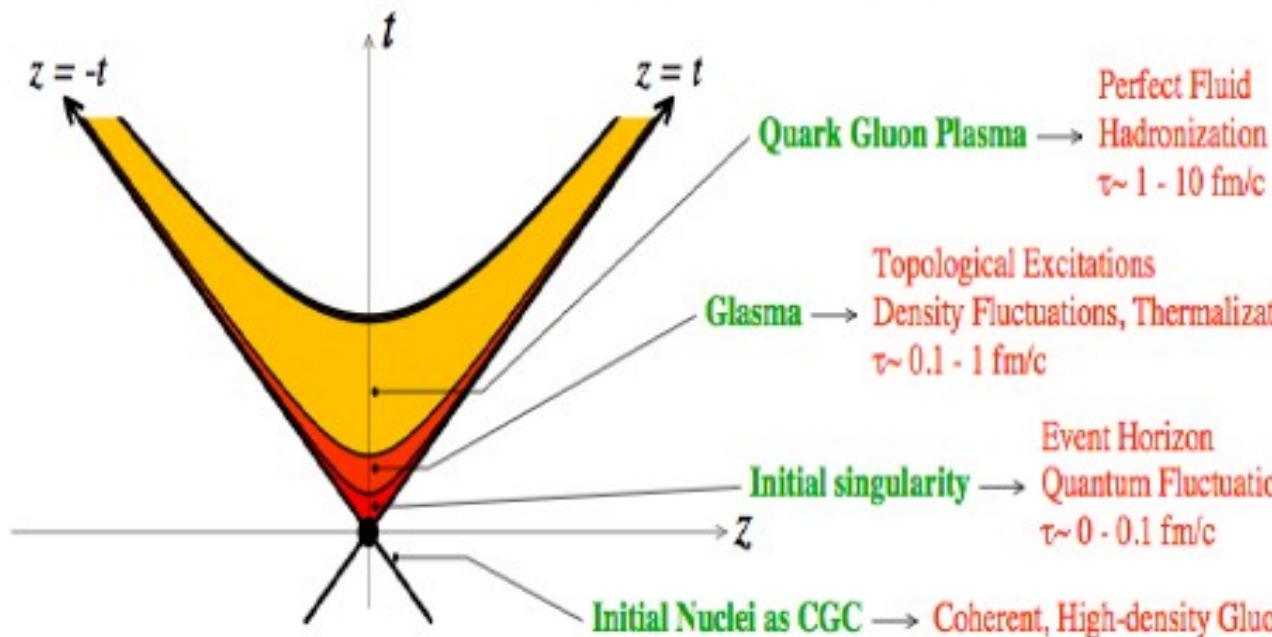
Explicit realization of Bjorken space-time picture

"Instantaneously" develop longitudinal color E and B fields

Two sheets of colored glass collide

Glass melts into gluons and thermalize

QGP is made which expands into a mixed phase of QGP and hadrons





Dumitru et al. perform calculations – and roughly describe the ridge as observed in CMS pp – including p_t dependence and the observation that the correlation has the same strength for both like and unlike sign pairs (same at RHIC; consistent with gluon emission ('glasma flux tube'))



P.Bożek on Oct 3, 2010:

‘the collective flow/hydrodynamics explains everything’,

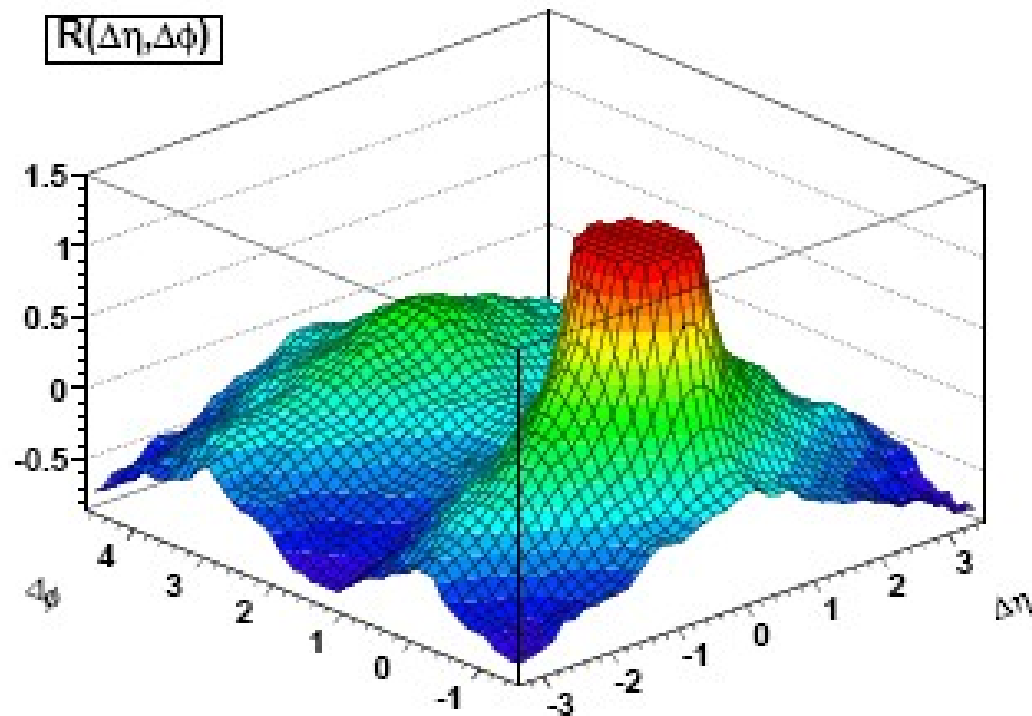
‘it would mean that the short-lived multiparticle system created in the collision is very strongly interacting and some degree of collectivity appears’



K.Werner, Yu.Karpenko, T.Pierog, arXiv., Nov 1

Flux tubes plus hydro

So does pp scattering provide as well a liquid, just ten times smaller than a heavy ion collision? It seems so!

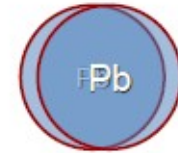
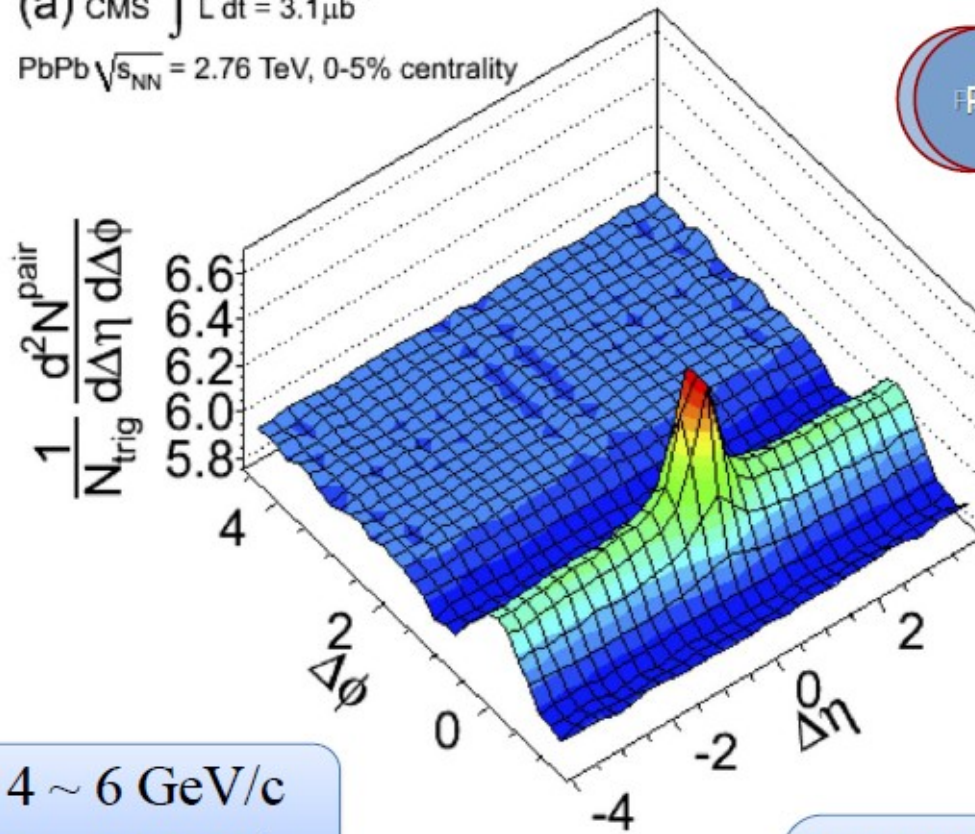




Now for the Pb Pb at 2.76 TeV/N:



(a) CMS $\int L dt = 3.1 \mu\text{b}^{-1}$
 PbPb $\sqrt{s_{NN}} = 2.76 \text{ TeV}$, 0-5% centrality



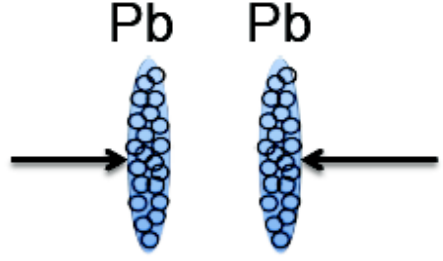
0-5% most central

arXiv:1105.2438

$p_T^{\text{trig}} : 4 \sim 6 \text{ GeV}/c$
 $p_T^{\text{assoc}} : 2 \sim 4 \text{ GeV}/c$

Associated hadron yield per trigger:

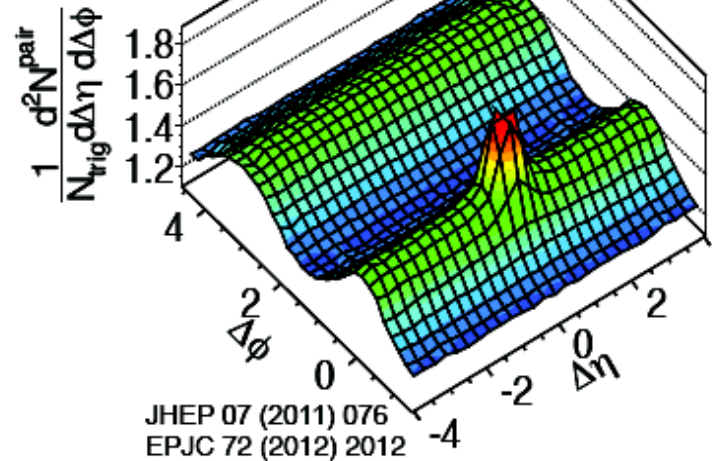
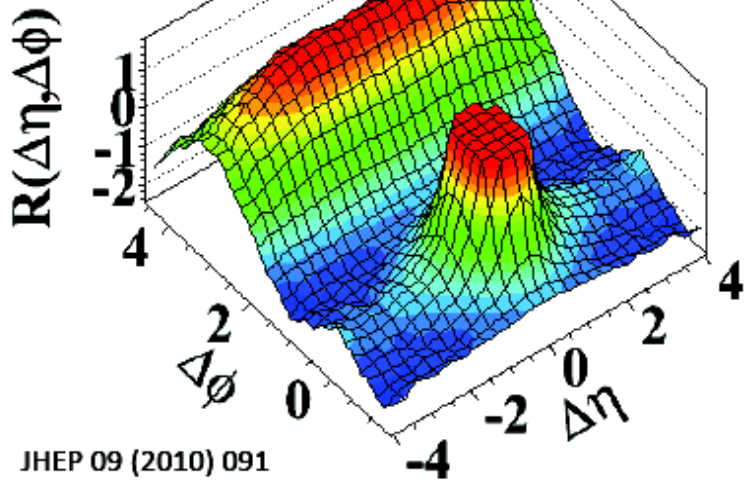
$$\frac{1}{N_{\text{trig}}} \frac{d^2 N^{\text{pair}}}{d\Delta\eta d\Delta\phi} = B(0,0) \times \frac{S(\Delta\eta, \Delta\phi)}{B(\Delta\eta, \Delta\phi)}$$



pp 7 TeV, $N > 110$

PbPb 2.76 TeV

35-40%

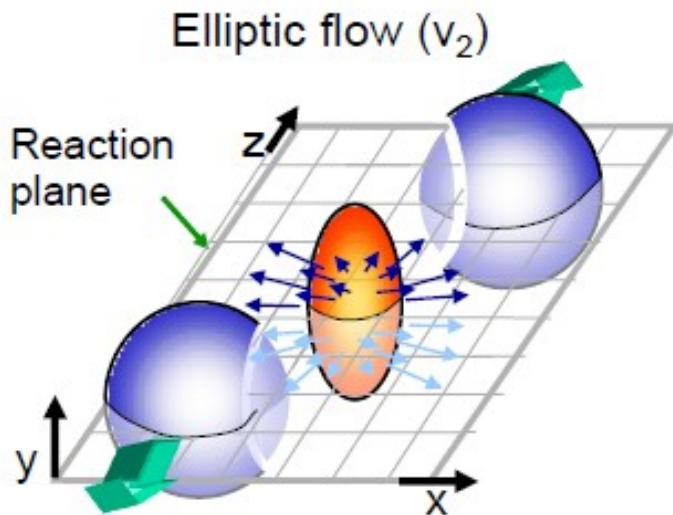


JHEP 09 (2010) 091

JHEP 07 (2011) 076
EPJC 72 (2012) 2012



New approach: Fourier analysis of azimuthal correlations (recall Božek...)



Standard azimuthal asymmetry in nuclear collisions: elliptic flow as a consequence of collective (hydro) behaviour

Large elliptic flow interpreted as evidence for low viscosity, almost perfect fluid

Symmetries of measured momentum distributions reflect the symmetries of event-averaged initial conditions



M.Luzum at QM11:

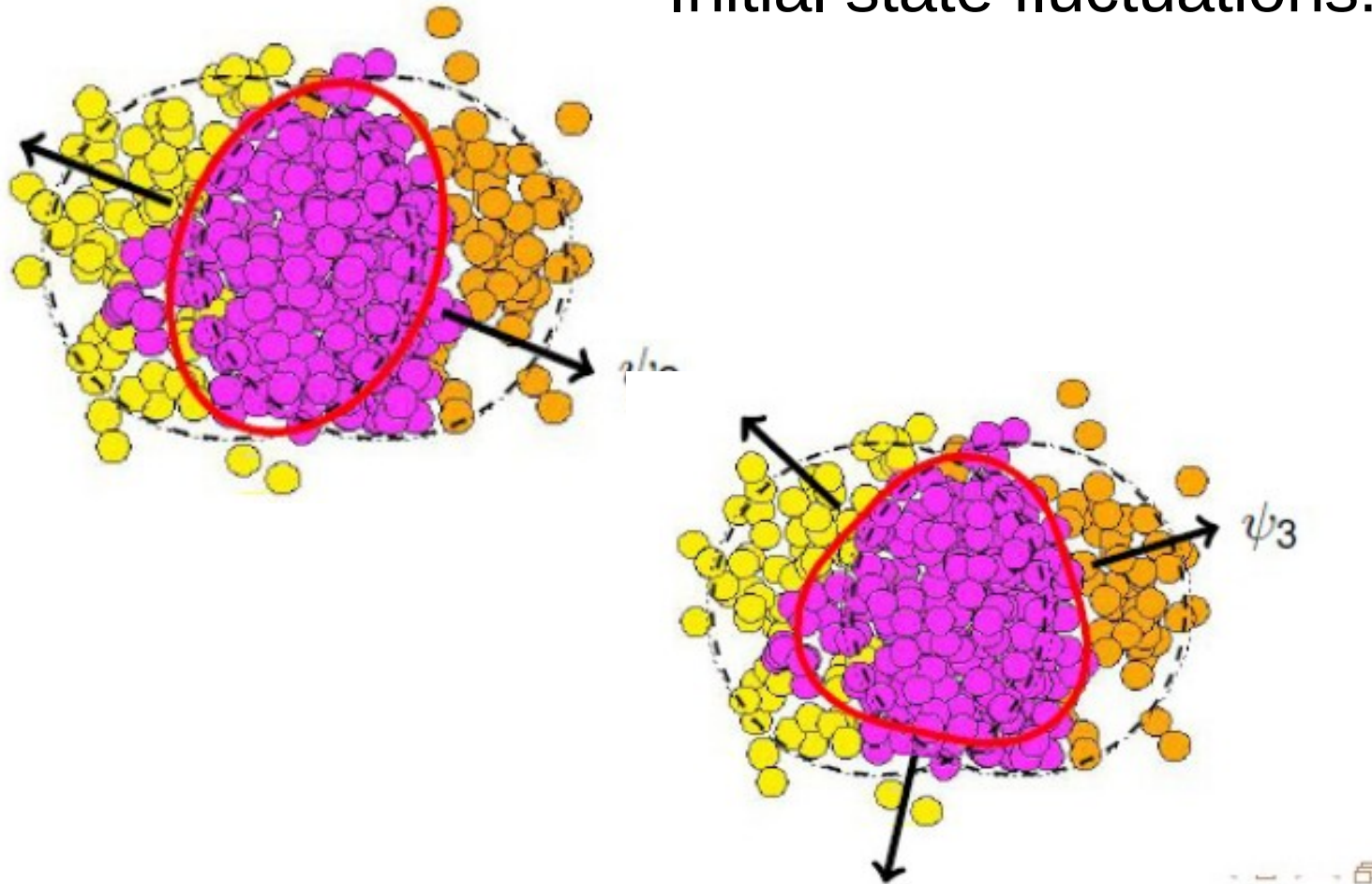
Event by event fluctuations break the apparent symmetry of the collision system – higher order odd **and even** harmonics may be important

Thus – the need for more terms in Fourier expansion of azimuthal distribution

Study Fourier expansion of pair distribution

$$\text{Fourier decomposition: } \frac{1}{N_{\text{trig}}} \frac{dN^{\text{pair}}}{d\Delta\phi} = \frac{N_{\text{assoc}}}{2\pi} \left(1 + 2 \sum_{n=1} V_n^f \cos(n\Delta\phi) \right)$$

Initial state fluctuations:



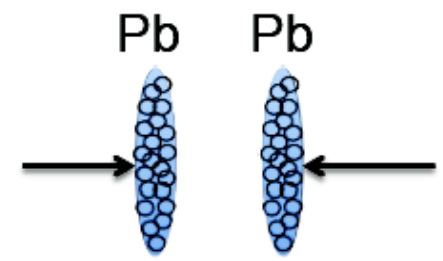
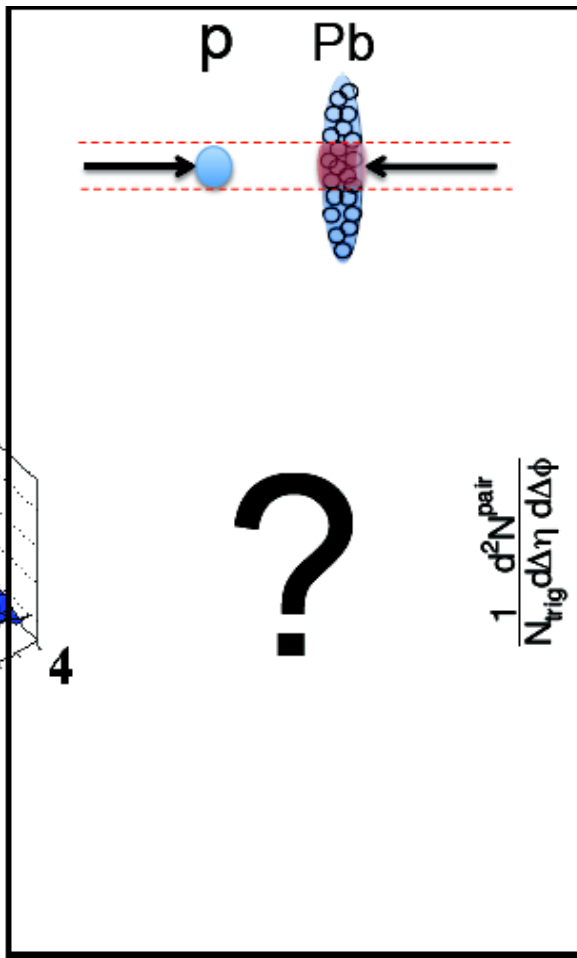


Perhaps the Ridge is just the result of this interplay between fluctuations in the initial state and viscosity of the hot, dense medium

(very lively discussions on the above...)

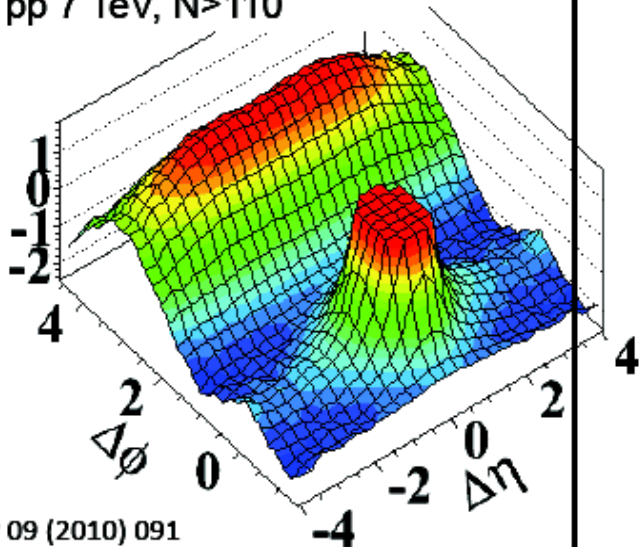
Fluctuations in the position of individual nucleons

—————> hydrodynamic expansion —————> higher order harmonics



pp 7 TeV, N>110

$R(\Delta\eta, \Delta\phi)$

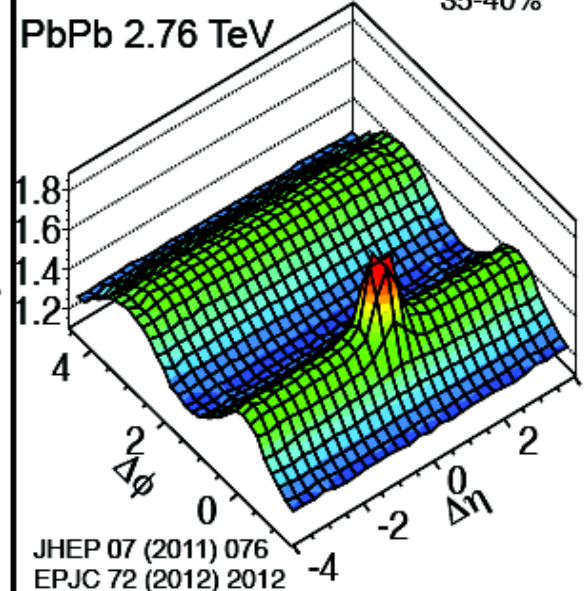


JHEP 09 (2010) 091

PbPb 2.76 TeV

35-40%

$\frac{1}{N_{\text{trig}}} \frac{d^2 N_{\text{pair}}}{d\Delta\eta d\Delta\phi}$

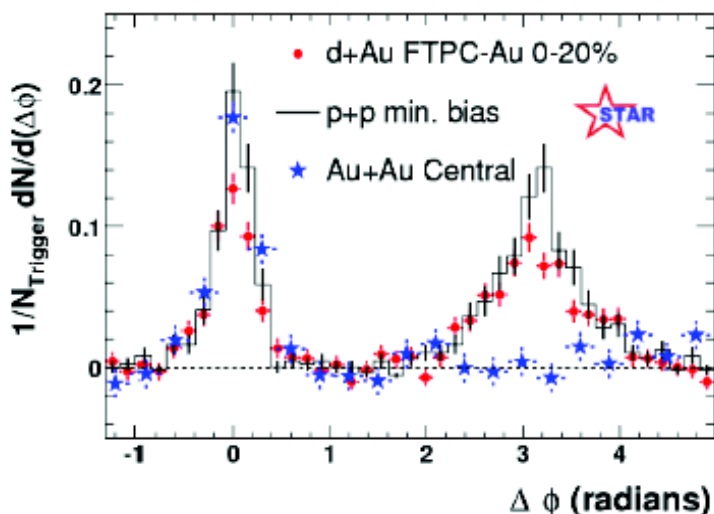


JHEP 07 (2011) 076
EPJC 72 (2012) 2012

What if colliding a proton and a nucleus?
Is there a ridge and how big is it?

Why studying pA collisions?

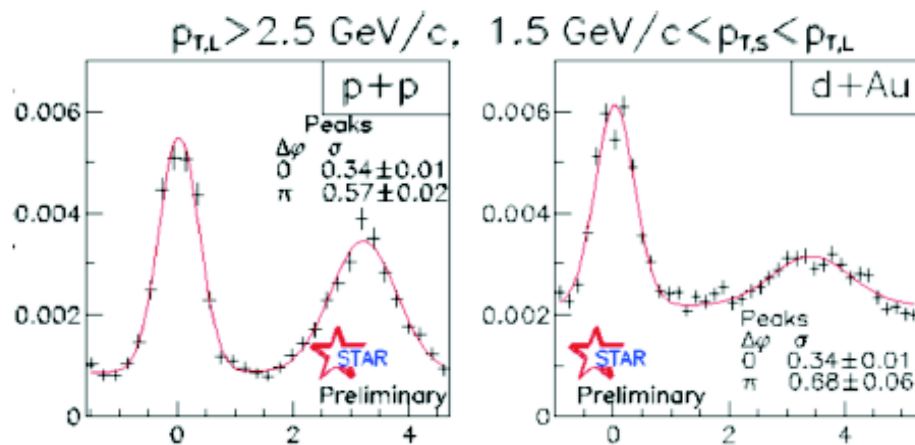
- Reference for nucleus-nucleus collisions: to address the issue of cold nuclear matter effects



Observation of jet quenching in AuAu but not in pp or dAu

➔ Final-state effect

- Probe nucleus structure at extremely small-x regime



Modification of away side in dAu at forward rapidity

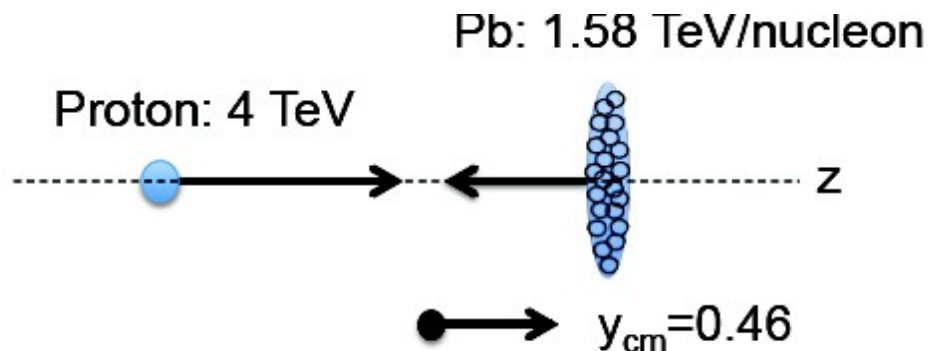
➔ Saturation of small-x gluons?



In 2012:

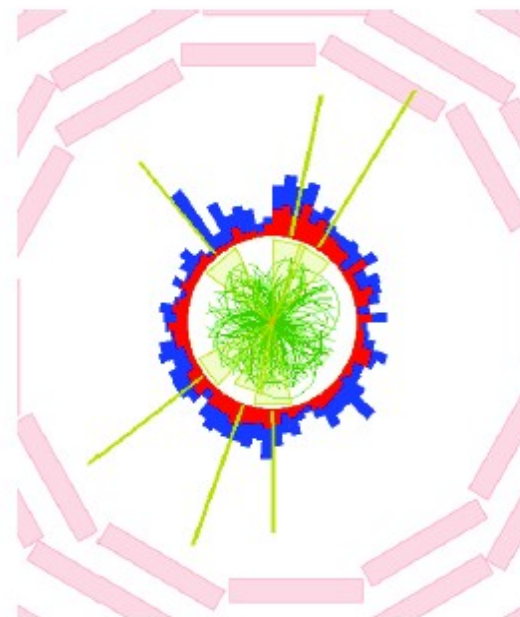
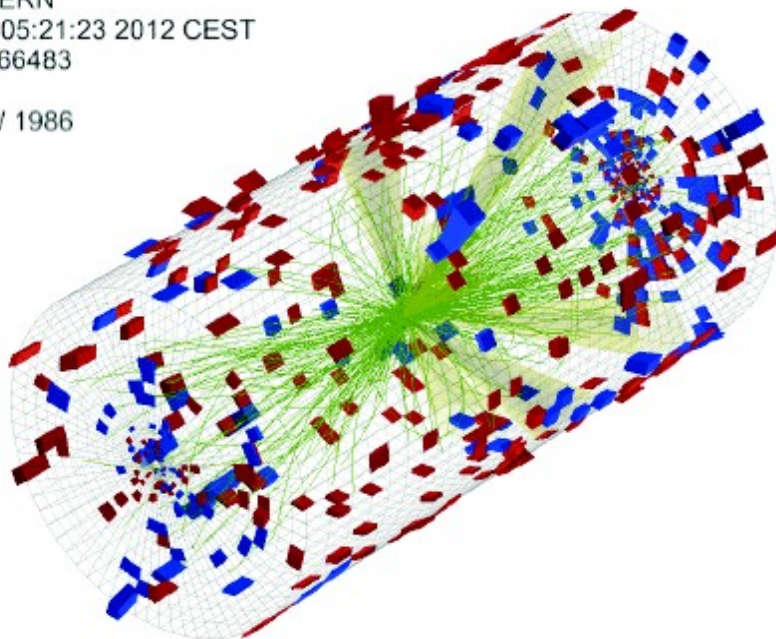


pPb pilot run at the LHC on
September 13, for ~ 8 hours



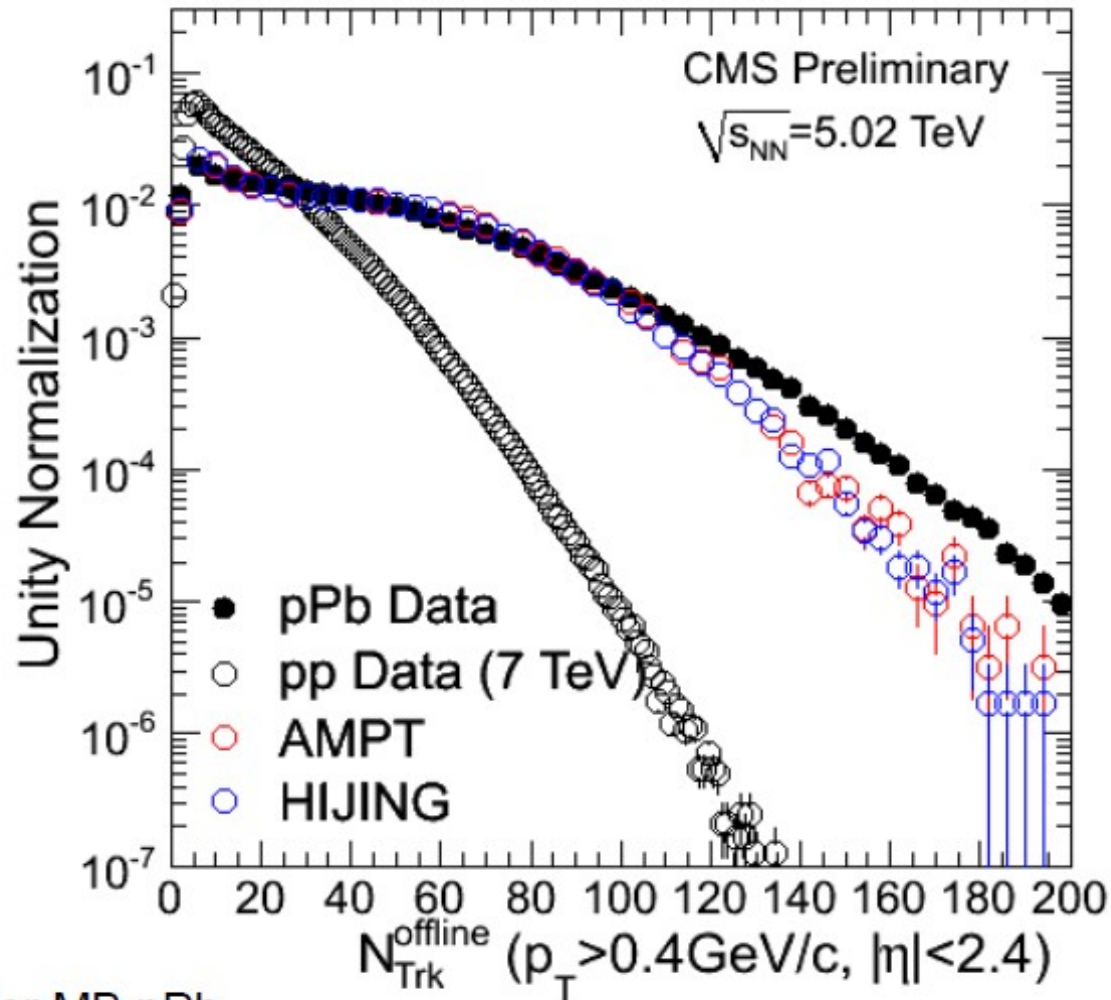
Center-of-mass energy: $\sqrt{s_{NN}} = 5.02 \text{ TeV}$

CMS Experiment at LHC, CERN
Data recorded: Thu Sep 13 05:21:23 2012 CEST
Run/Event: 202792 / 1737666483
Lumi section: 918
Orbit/Crossing: 240400935 / 1986





~ 2 million minimum bias pPb events were collected ($1 \mu\text{b}^{-1}$)



$\langle N_{\text{trk}}^{\text{offline}} \rangle \sim 40$ for MB pPb



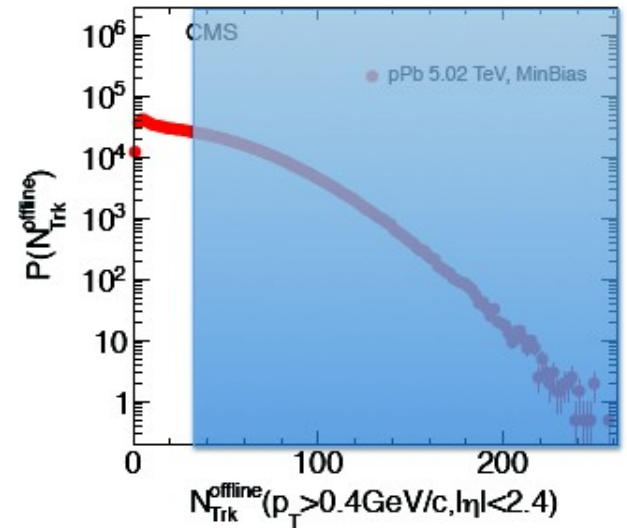
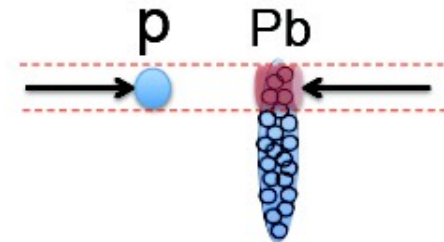
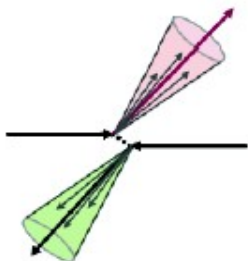
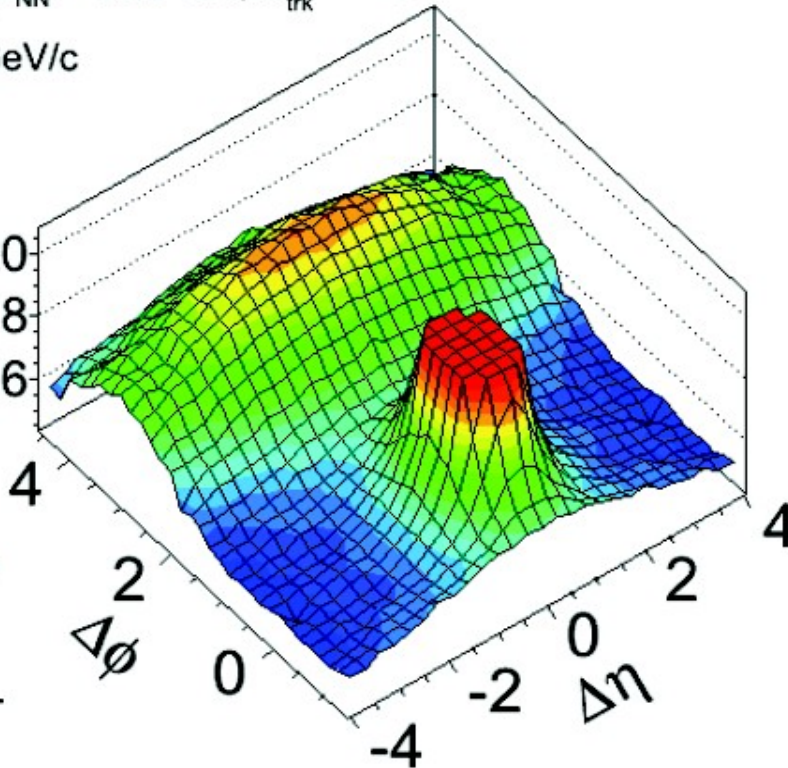
$$N_{\text{trk}}^{\text{offline}} < 35$$

CMS pPb $\sqrt{s_{\text{NN}}} = 5.02 \text{ TeV}$, $N_{\text{trk}}^{\text{offline}} < 35$

$1 < p_{\text{T}} < 3 \text{ GeV}/c$

$$\frac{1}{N_{\text{trig}}} \frac{d^2 N^{\text{pair}}}{d\Delta\eta d\Delta\phi}$$

0.20
0.18
0.16



Fraction of cross section: 50.4%

Dijet-like correlations in low multiplicity (or peripheral) pPb!

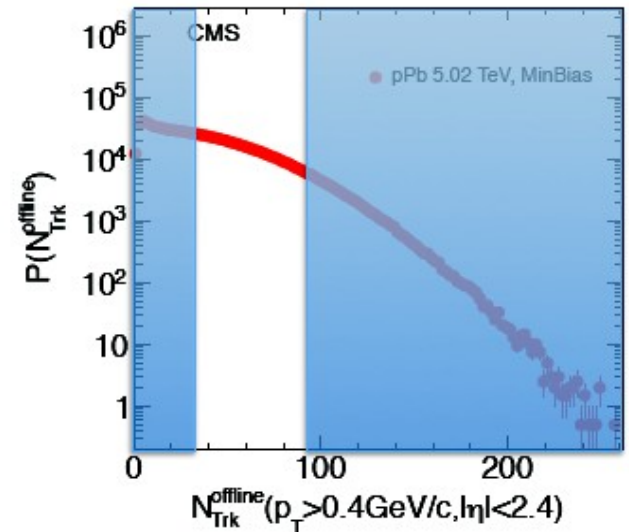
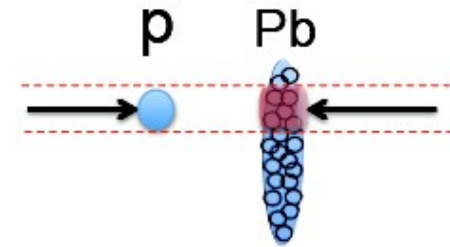
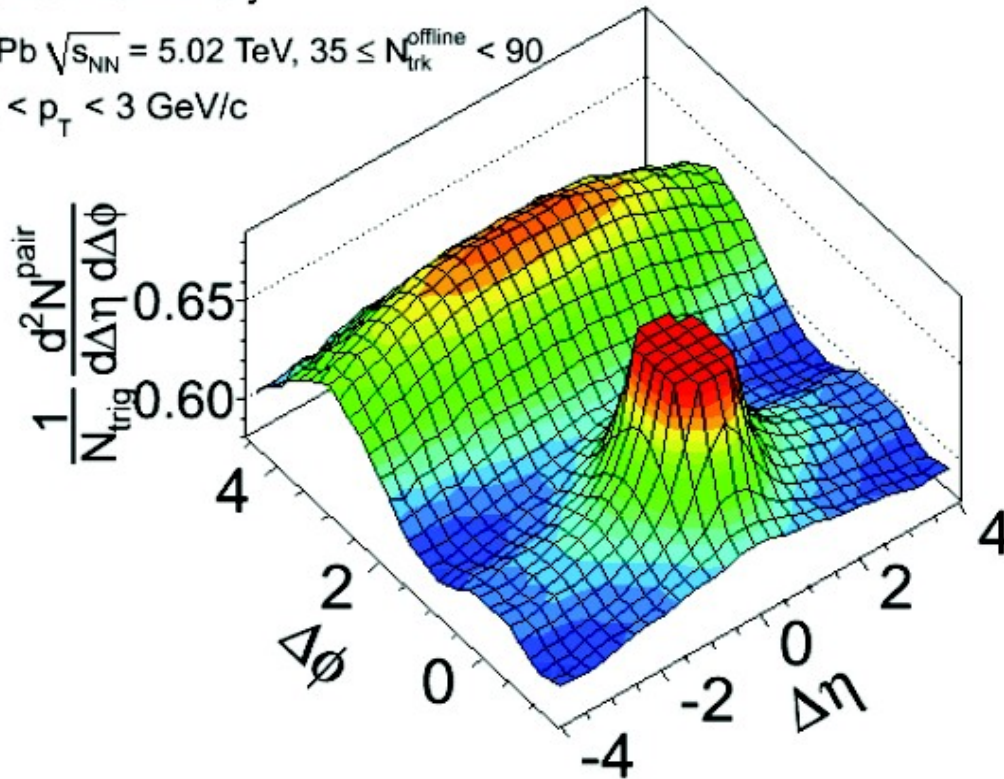


$$35 \leq N_{\text{Trk}}^{\text{offline}} < 90$$

CMS Preliminary

pPb $\sqrt{s_{\text{NN}}} = 5.02$ TeV, $35 \leq N_{\text{Trk}}^{\text{offline}} < 90$

$1 < p_T < 3$ GeV/c



Fraction of cross section: 41.9%

Ridge-like structure on the near side ($\Delta\phi \sim 0$) turns on as multiplicity increases

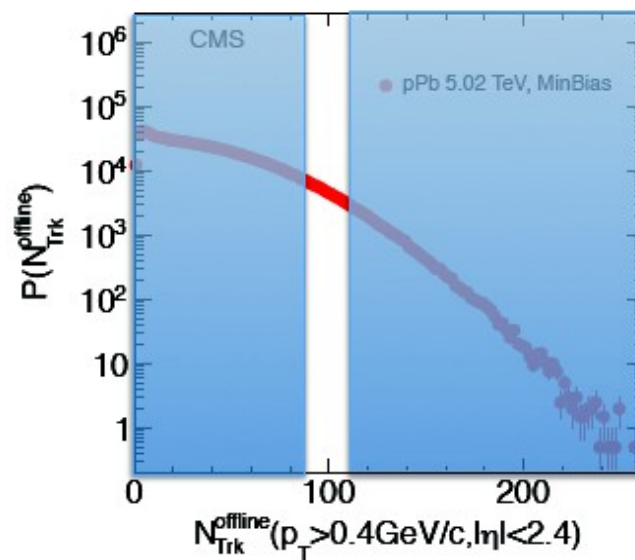
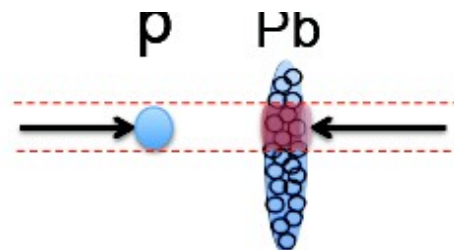
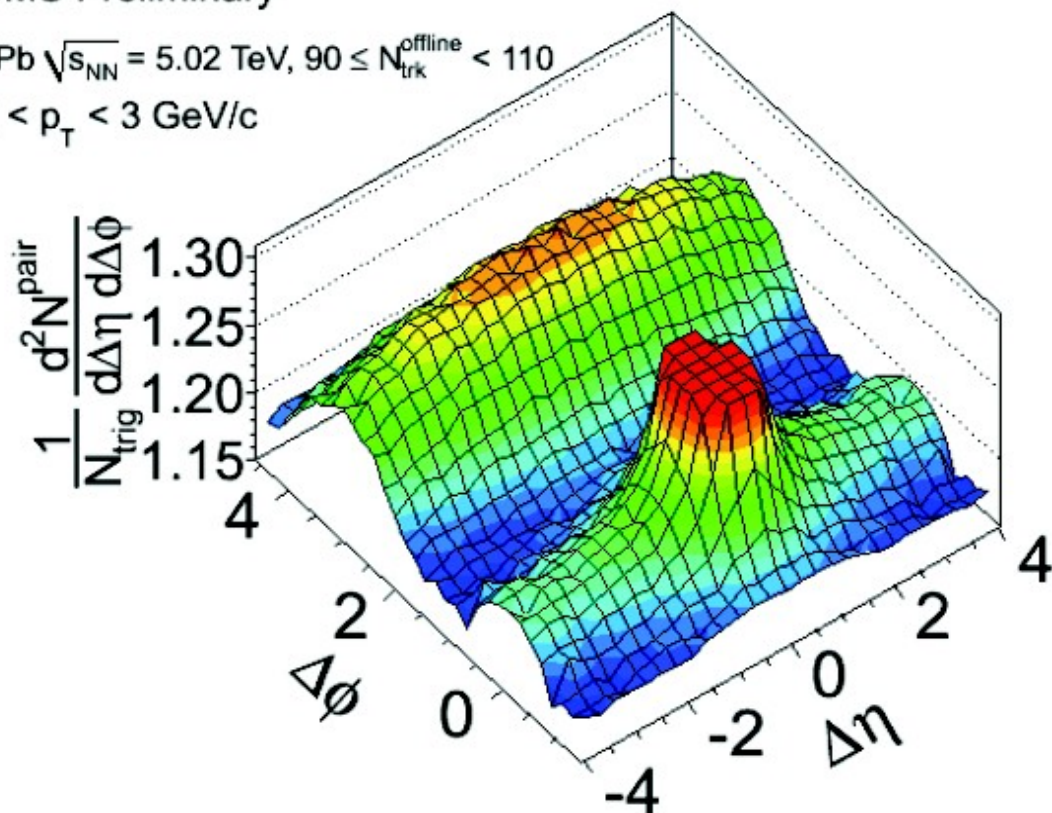


$$90 \leq N_{\text{trk}}^{\text{offline}} < 110$$

CMS Preliminary

pPb $\sqrt{s_{\text{NN}}} = 5.02 \text{ TeV}$, $90 \leq N_{\text{trk}}^{\text{offline}} < 110$

$1 < p_{\text{T}} < 3 \text{ GeV}/c$



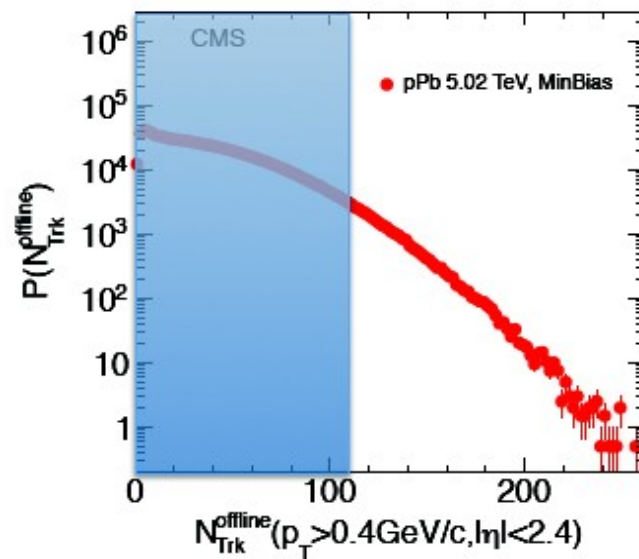
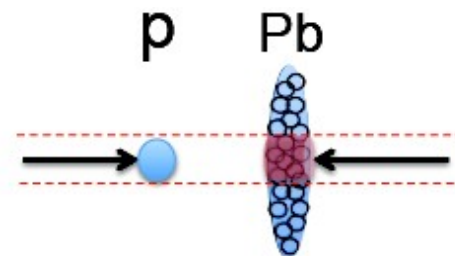
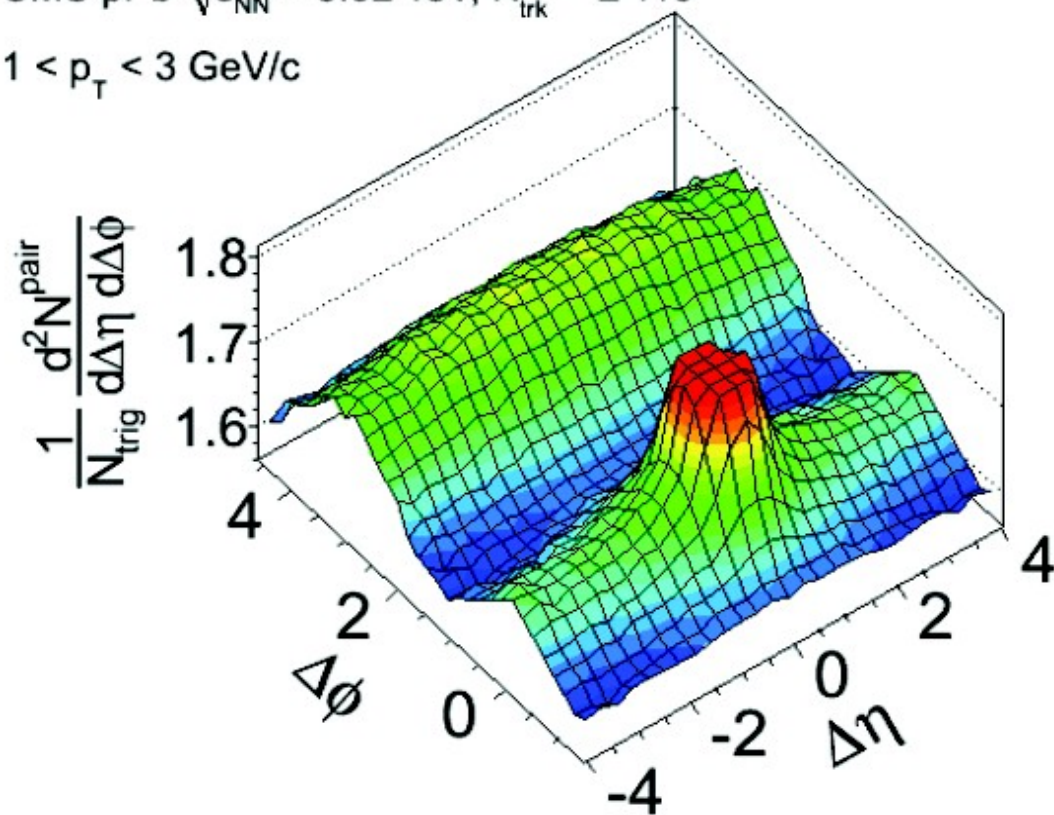
Fraction of cross section: 4.6%



$$N_{\text{trk}}^{\text{offline}} \geq 110$$

CMS pPb $\sqrt{s_{\text{NN}}} = 5.02 \text{ TeV}$, $N_{\text{trk}}^{\text{offline}} \geq 110$

$1 < p_T < 3 \text{ GeV}/c$



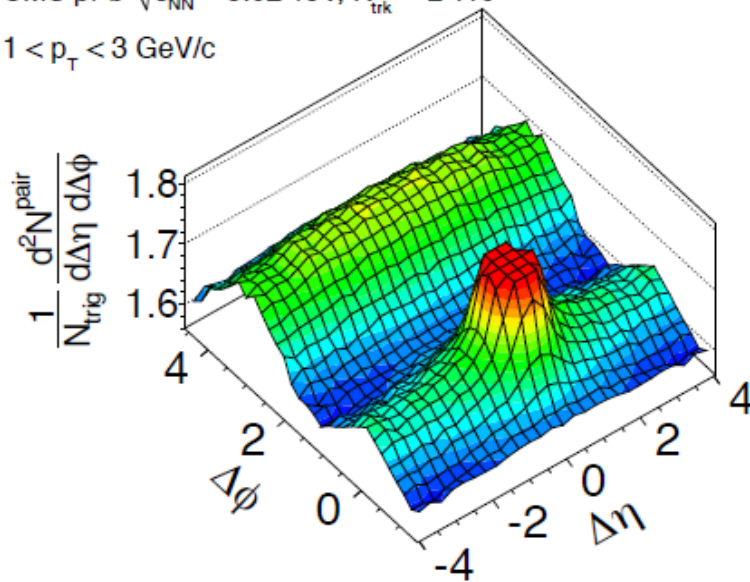
Fraction of cross section: 3.1%



No “ridge” in pPb MC models

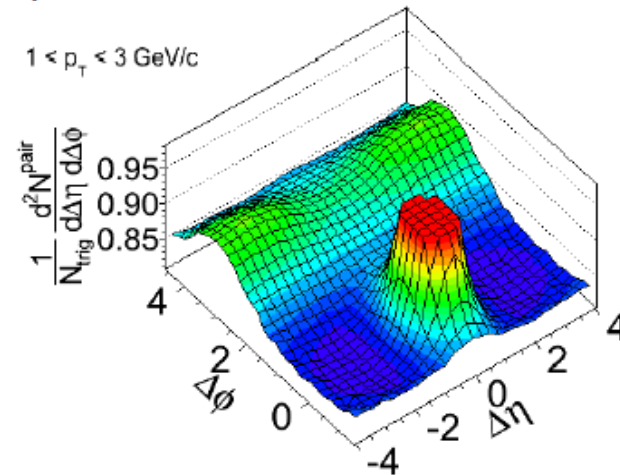
CMS pPb $\sqrt{s_{NN}} = 5.02$ TeV, $N_{\text{trk}}^{\text{offline}} \geq 110$

$1 < p_T < 3$ GeV/c



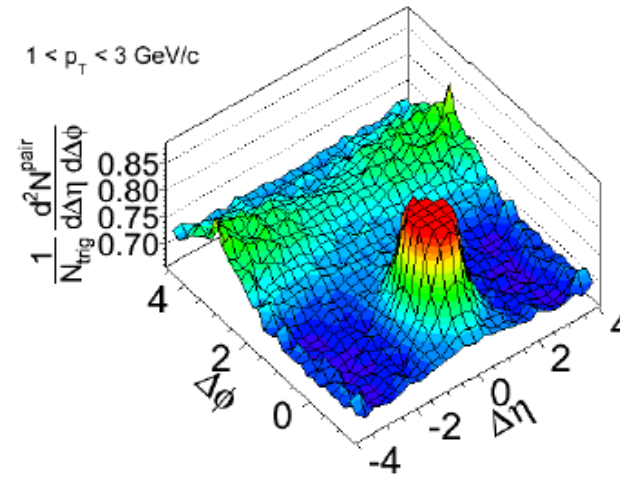
pPb HIJING, $N > 120$

$1 < p_T < 3$ GeV/c



pPb AMPT, $N > 100$

$1 < p_T < 3$ GeV/c



Ridge is not predicted by common pPb MC event generators, as in pp!

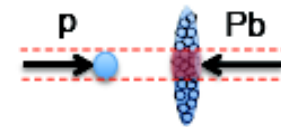
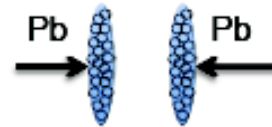


Summary of CMS pPb (as on Oct 2012):

- CMS observed a significant long-range near-side correlation (“ridge”) in high multiplicity (central) pPb collisions at 5.02 TeV
 - much stronger than in pp
 - not in common pPb MC models
- Multiplicity and p_T dependence of the ridge in pPb have been investigated:
 - turns on slightly above average minimum bias multiplicity
 - rises and falls with p_T , similar trend as observed in PbPb and pp

New pPb data from 2013 run

Pushing into very high multiplicity region for pPb



60 billion sampled pPb events
at 5 TeV from 2013 run

~ 55-60% centrality

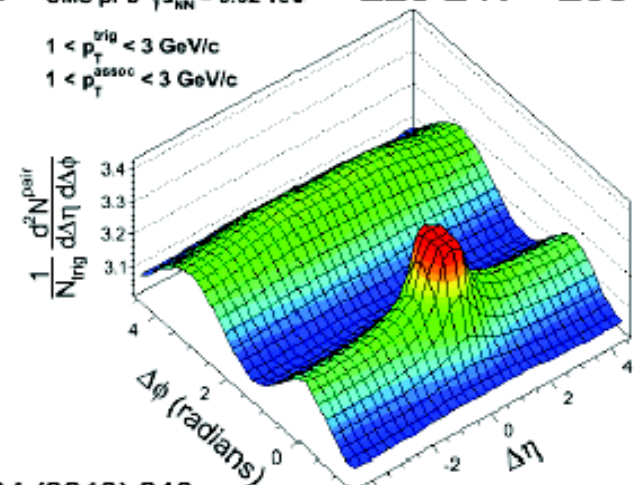
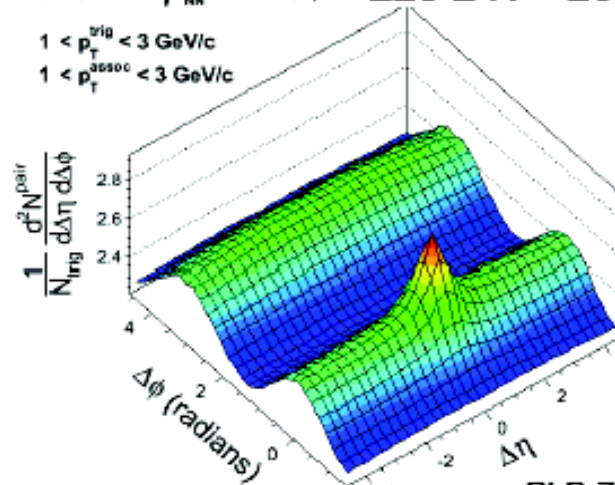
0-0.0003% most central

CMS PbPb $\sqrt{s_{NN}} = 2.76$ TeV, $220 \leq N < 260$

$1 < p_T^{\text{orig}} < 3$ GeV/c
 $1 < p_T^{\text{assoc}} < 3$ GeV/c

CMS pPb $\sqrt{s_{NN}} = 5.02$ TeV, $220 \leq N < 260$

$1 < p_T^{\text{orig}} < 3$ GeV/c
 $1 < p_T^{\text{assoc}} < 3$ GeV/c



PLB 724 (2013) 213

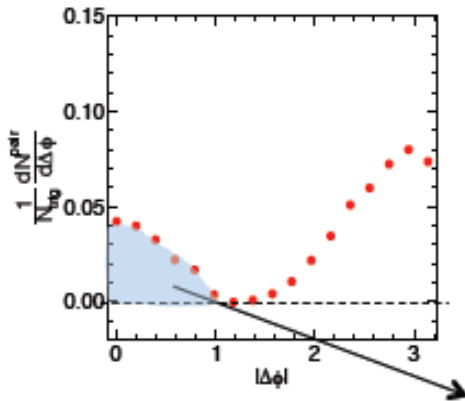
Hydrodynamics
well established

The phenomena is
very similar in pPb

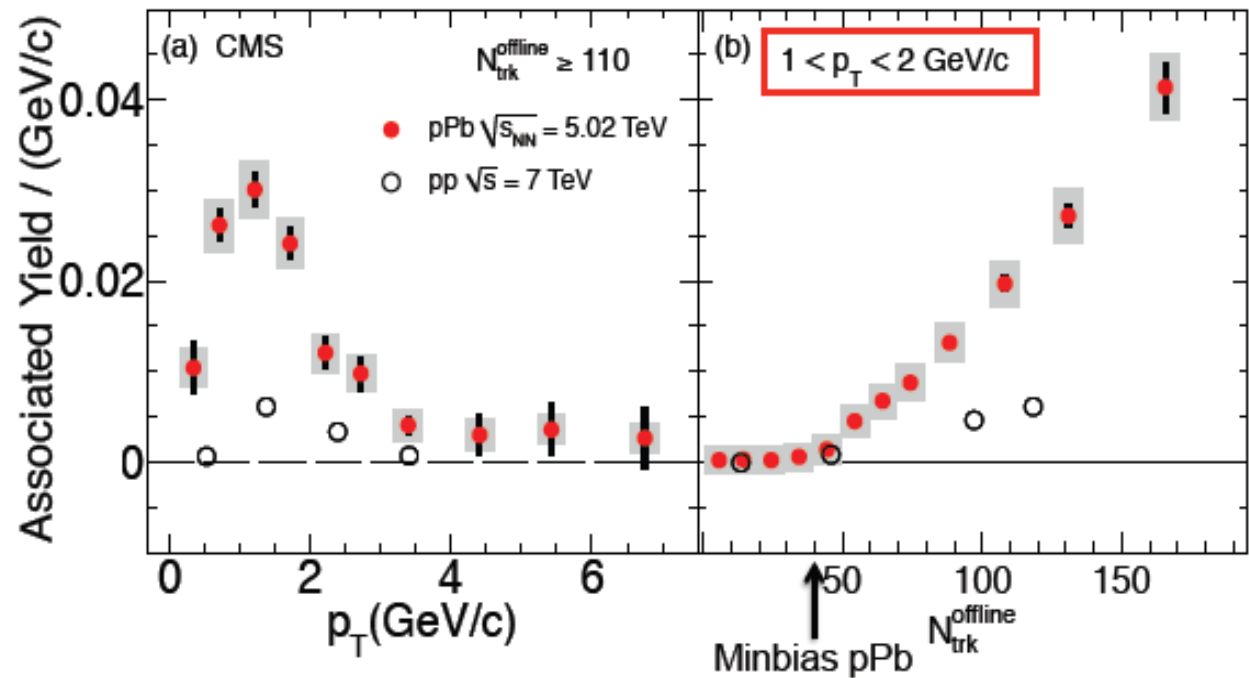
- High multiplicity (HM) helps suppressing away-side jet correlations
- Other centrality variable, e.g., HF energy, was also investigated



Quantify the ridge



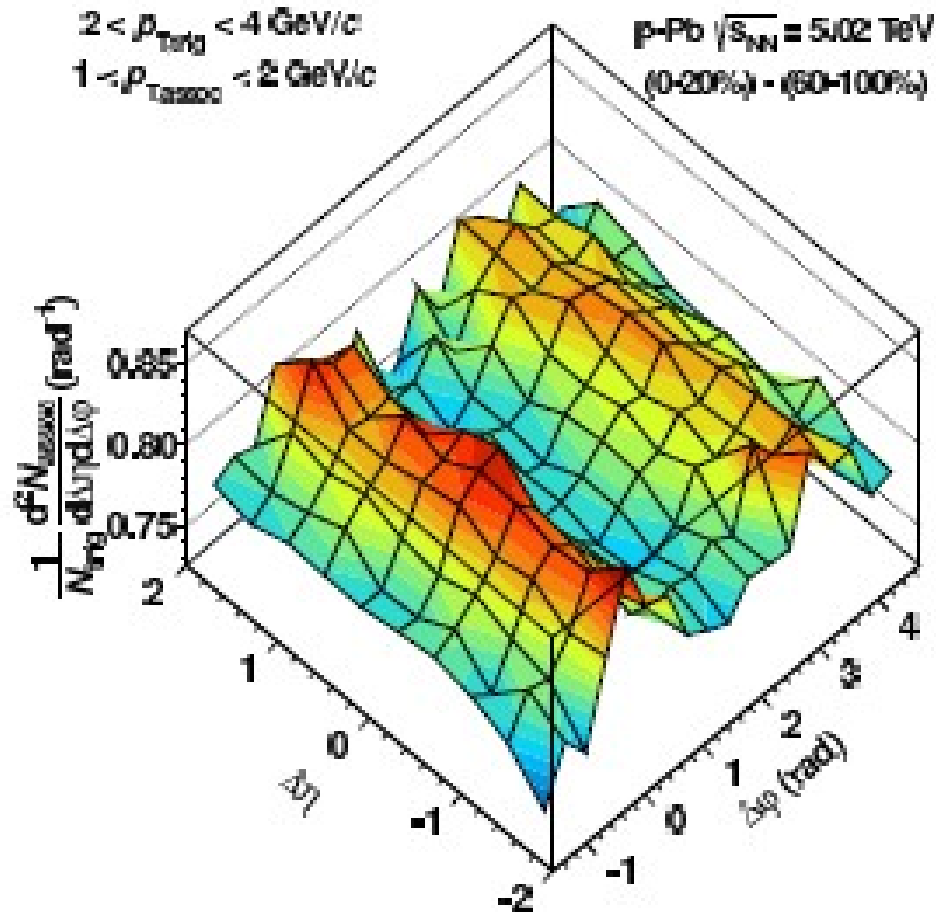
PLB718 (2013) 795



- Magnitude of the ridge is much large in pPb than in pp
- “Rise and Fall” as a function of p_T , similar to pp (even PbPb)!
- Become significant at $N=40-50$ and linearly increases, similar to pp!



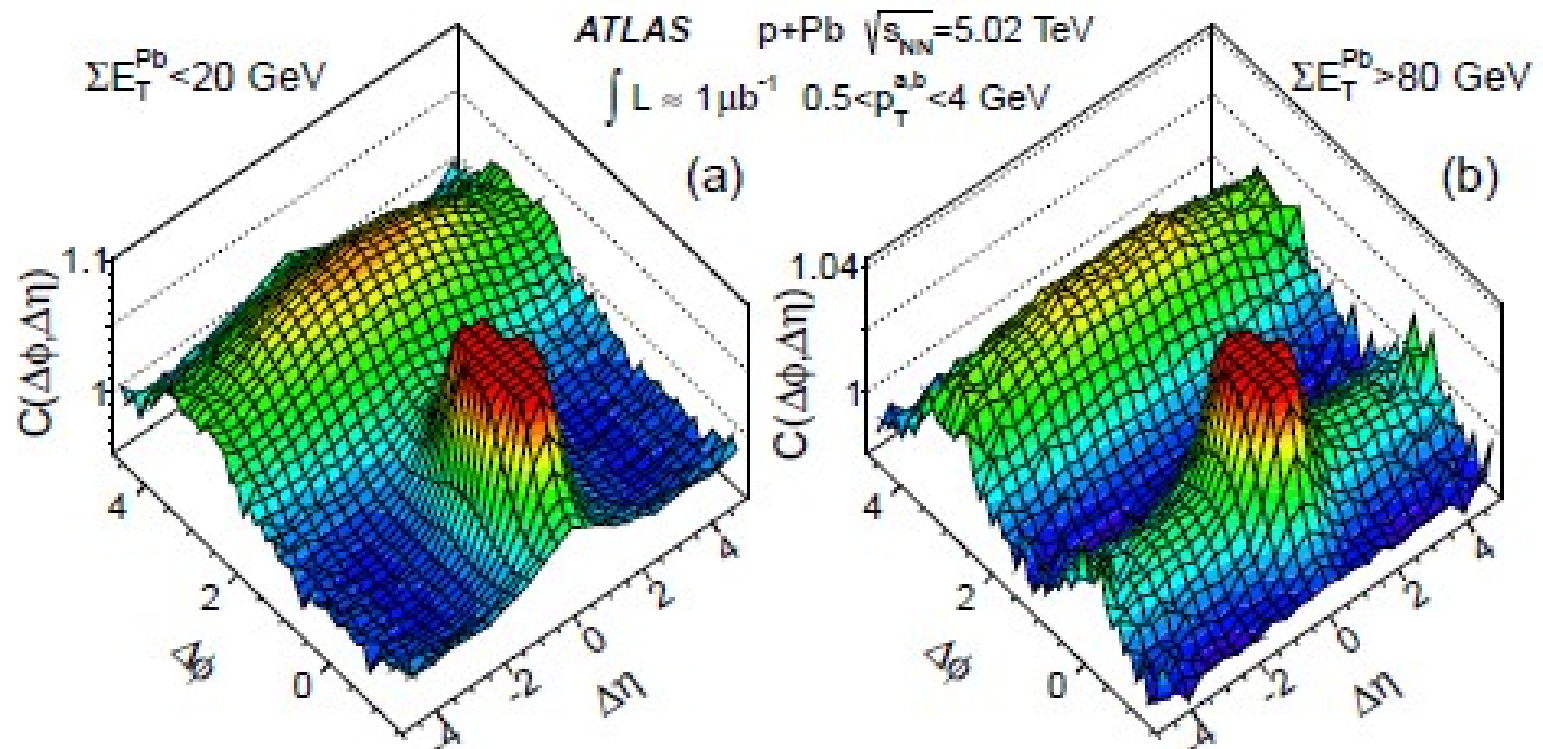
ALICE looks for Ridge in pPb both near and away – and finds it



Notice: this is the difference between 'central' and 'peripheral'



And so does ATLAS:

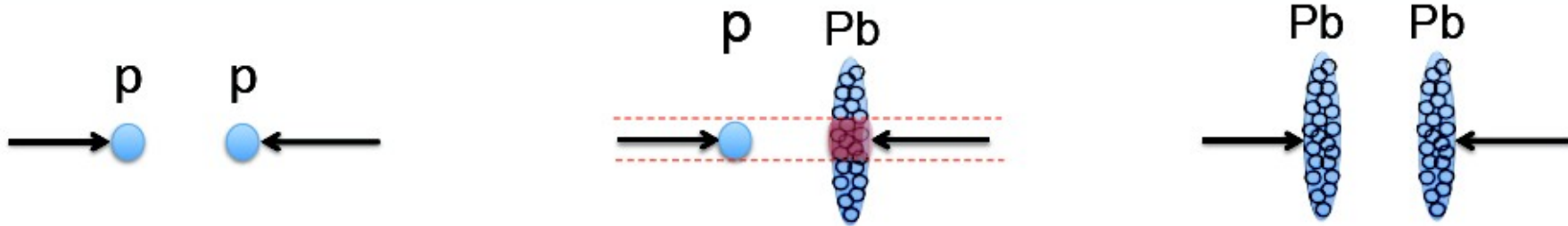




To sum up:



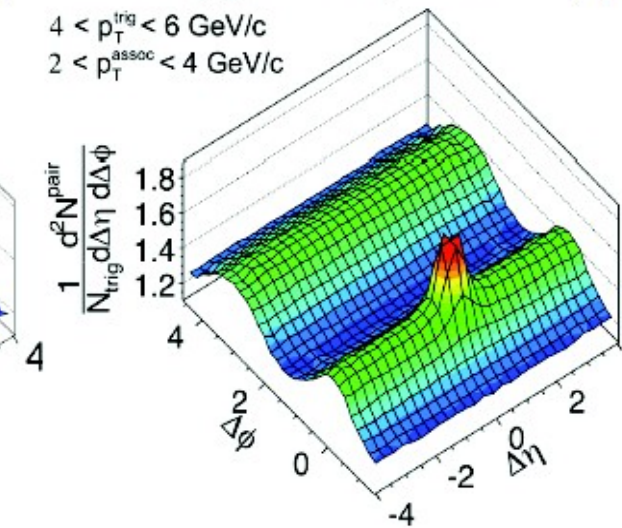
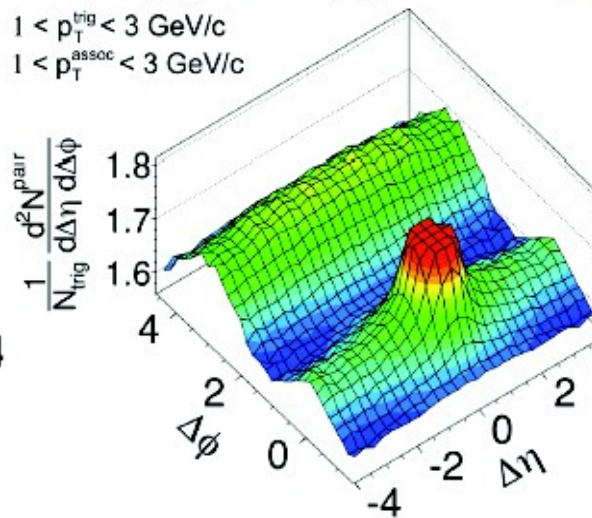
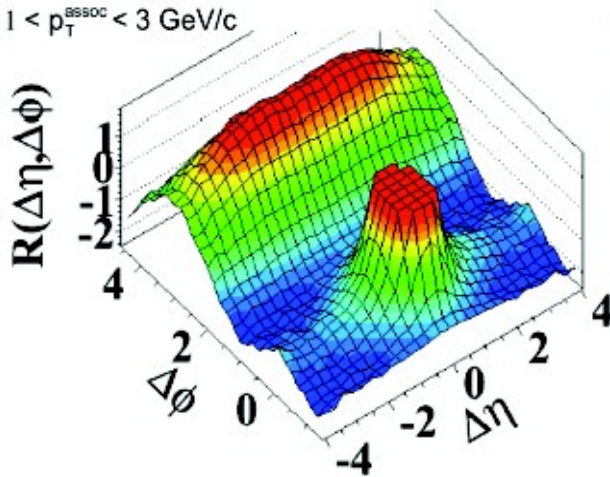
A complete picture of ridge correlations



CMS pp $\sqrt{s} = 7$ TeV, $N_{\text{trk}}^{\text{offline}} \geq 110$
 $1 < p_{\text{T}}^{\text{trig}} < 3$ GeV/c
 $1 < p_{\text{T}}^{\text{assoc}} < 3$ GeV/c

(a) CMS pPb $\sqrt{s_{\text{NN}}} = 5.02$ TeV, $N_{\text{trk}}^{\text{offline}} \geq 110$
 $1 < p_{\text{T}}^{\text{trig}} < 3$ GeV/c
 $1 < p_{\text{T}}^{\text{assoc}} < 3$ GeV/c

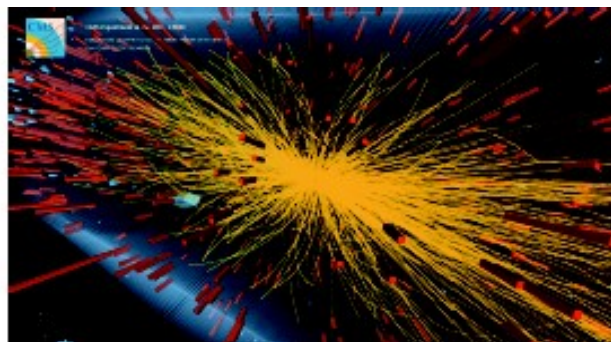
(b) CMS PbPb $\sqrt{s_{\text{NN}}} = 2.76$ TeV, 35-40%
 $4 < p_{\text{T}}^{\text{trig}} < 6$ GeV/c
 $2 < p_{\text{T}}^{\text{assoc}} < 4$ GeV/c



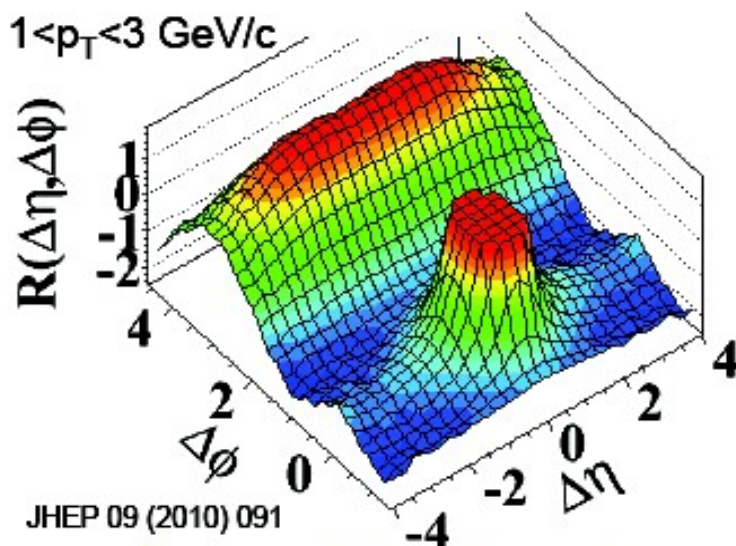
Is there a common origin of the ridge in all systems?

- Hydrodynamic flow effect like in PbPb?

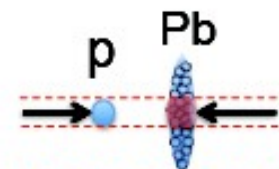
High-multiplicity
pPb event
(418 tracks)



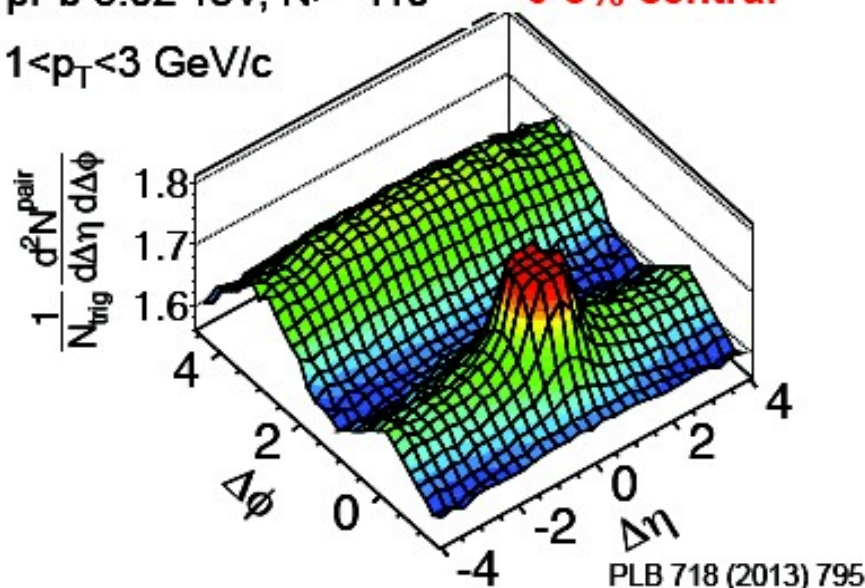
pp 7 TeV, $N \geq 110$ **0.0007% central**
 $1 < p_T < 3$ GeV/c



Most sensitive to fluctuations
inside a nucleon!



pPb 5.02 TeV, $N \geq 110$ **0-3% central**
 $1 < p_T < 3$ GeV/c



2 million MB events from 2012 pilot run

**Flow (or QGP) manifests also in pp and pPb?
Or quantum interference of gluon (CGC model)?**



Attempts at interpretation:



Fluctuations plus hydrodynamics?

Color Glass Condensate/saturation?

For PbPb recent observation of azimuthal anisotropy for high E_T cannot result from hydro – comes from jet quench ?

Look for jet quenching in pp?

What about pPb?



pPb ridge is a real puzzle!

If (as it is dominantly interpreted) it is of hydrodynamic origin – how come such a tiny object (few fm^3) behaves as a macroscopic ideal fluid? Just like the matter created in central PbPb (of the order of 5000 fm^3)?

Same with high multiplicity pp!